

# Summer One Term Year 2

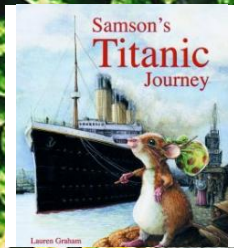
Pole to Pole



## English

Linked to our topic Pole to Pole, we will start with the text, 'Samson's Titanic Journey'. We will find out facts about this historic journey and sequence the events.

We are reading...



We will then move onto; 'The Great Explorer.' We will predict what we think might happen in the story. We will then look at conjunctions, commas, adjectives and the story setting.



We will use inspiration from this book, to write our own narrative story!

## Maths

As mathematicians, we will be learning about length and height. We will be accurately measuring from 0 in m and cm as well as comparing and ordering lengths. We will then move on to look at mass and capacity. We will revisit our Year 1 learning and progress to using grams and kilograms, millilitres and litres. We will be using our addition and subtraction knowledge to answer reasoning questions about these.

## Science

As scientists, we will be studying 'Plants'. We will be exploring bulbs and seeds, finding out what plants need to grow. We will also be conducting an experiment to observe and describe how bulbs and seeds grow into mature plants.



## PE

This half term we will be building up our athletics skills by progressing our running, jumping and throwing. This will help us get ready for Sports Day in Summer 2!

In dance, we will continue our learning on how our bodies can move. Pupils will also explore, levels, shapes, directions and pathways. They will work independently and with others to perform.



## Geography

In Geography we are going to be recapping on the names of continents and Oceans. We will look at the climate and physical features of both hot and cold regions. We will look at what makes them hot/cold places to live and discover how both humans and animals adapt to their surroundings.

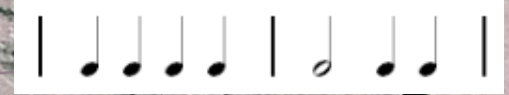
## ART

In Art we will be studying the artist Linda Lang who creates art inspired by climate change and her expeditions. We will be using oil pastels to create images of icicles linked to our topic 'Pole to Pole'. We will learn how to blend oil pastels and use colours within one family to create depth.



## Music

We will focus on two- and three-time rhythms, exploring beat patterns and groupings inspired by 20th-century classical music. We will create original compositions to accompany a short film featuring Charlie Chaplin, experimenting with pitch (high and low), duration (long and short), and dynamics (loud and soft) to enhance the storytelling through music.



## PSHCE

Our PSHCE unit will be Relationships; we will be considering and discussion physical contact boundaries, different types of families and friendships. We will also start a unit all about healthy eating.

## Computing

In Computing we will be looking at data and information collection. In this, we will be collecting data in tally charts and using attributes to organise and present the data on a computer. We will link this to our Science learning around pictograms.