

Summer One - Year 6



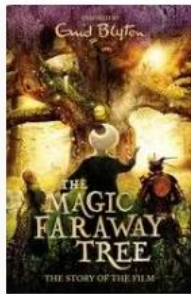
English

Our focus will be grammar and punctuation revision for the SATS.

We will be refreshing our knowledge on:

- Word class
- Passive
- Use of dashes
- Semi-colons and colons
- Subjunctive form
- Prefixes and Suffixes
- Co-ordinating conjunctions
- Subordinating conjunctions.

We are reading...



Plus, a variety of text extracts to prepare for our Reading SATS.

Dates for your diary:

- SATS week starts Monday 11th May. Year 6 will be invited to breakfast before school.
- Monday 1st June: Year 6 residential begins at Lodge Hill.

Maths

As mathematicians, we will be preparing for SATs by revising challenging topics such as:

- Long multiplication/division
- Fractions, decimals and percentages
- Decimals
- Area, perimeter and volume
- Graphs and charts
- Reasoning

Science

As scientists, we will be studying 'The Circulatory System'.

We will learn to:

- Explain the composition and function of blood.
- Explore the structure and function of the human heart.
- Know how nutrients and water are transported in the blood.

PE

This term, we will be outside making the most of the dry weather to continue our trips to the college to train with the students there. In school, we will also enjoy cricket.

Our focus will be:

- Choose and implement a range of strategies and tactics.
- Combine and perform more complex skills at great speed.
- Recognise and describe good individual and team performances.
- Use a range of tactics for attacking and defending in the role of bowler, batter and fielder.



Geography

As geographers, we will be exploring the question:
Is Chichester a good tourist destination?

In this geography unit on tourism, trade, and economics, we will explore how countries make money and the role of trade in the economy. We will review how tourism can significantly boost the economy and carry out fieldwork to evaluate whether Chichester makes a good tourist destination. **We will do field work in Summer term 2.**

DT

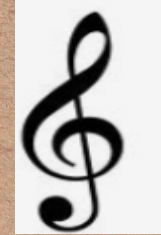
In DT, we will be designing a playground featuring a variety of different structures.

We will do the following:

- Consider how the structures will be used.
- assess effective and ineffective designs.
- Build a range of play apparatus structures drawing upon new and prior knowledge of structures.
- Use a range of materials to reinforce and add decoration to structures.
- Improve a design plan based on peer evaluation.
- Test and adapt a design to improve it as it is developed.
- Identify what makes a successful structure.

Music

As musicians, we will be creating music to accompany a short film about a race. We will be composing an extended melody and accompaniment.



PSHCE

In PSHE, we are learning about relationships. We will be discussing mental health; love and loss; power and control; being online and using technology responsibly.

Computing

In Computing, our topic is 'Webpage creation'.

We will learn about:

- What makes a successful webpage.
- How search results are ranked.
- Designing and creating our own webpages.
- Considering copyright, aesthetics and navigation.
- Recognising the implications of linking to content owned by other people.

RE

In RE, we are going to be studying an Islam enquiry. We will be discussing the question:
Does belief in Akhirah (life after death) help Muslims lead good lives? Part 1